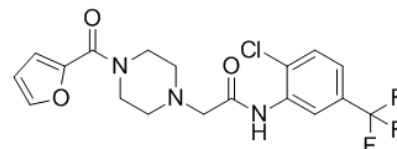


Product Name : ML348
Cat. No. : PC-42240
CAS No. : 899713-86-1
Molecular Formula : C₁₈H₁₇ClF₃N₃O₃
Molecular Weight : 415.7941
Target : Phospholipase
Solubility : 10 mM in DMSO



Biological Activity

ML348 is a potent, selective Acyl protein thioesterase 1 (**APT-1**, LYPLA1) with IC₅₀ of 210 nM, displays >10-fold selectivity over APT-2, >47-fold selectivity over a panel of >20 serine hydrolases. ML348 shows no biologically significant effects in NRAS mutant melanoma cells.

References

- Adibekian A, et al. Probe Reports from the NIH Molecular Libraries Program [Internet].
Vujic I, et al. Oncotarget. 2016 Feb 9;7(6):7297-306.
Won SJ, et al. ACS Chem Biol. 2016 Dec 16;11(12):3374-3382.

Caution: Product has not been fully validated for medical applications. Lab Use Only!

E-mail: tech@probechem.com